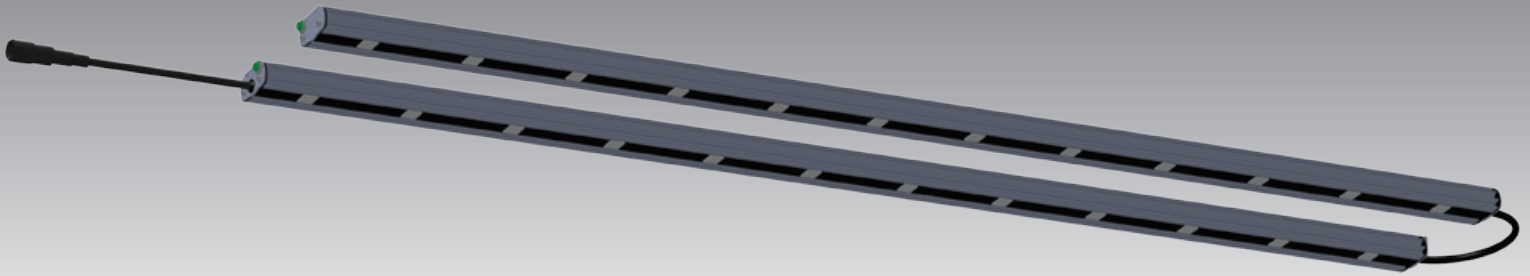


Illumitex[®] Eclipse II LED Bar Fixture



Overview

Commercial Grower & Research Lighting

The Eclipse II LED Bar fixture was developed in collaboration with universities and corporate research partners to meet the needs of commercial growers and research lighting.

The Eclipse II provides 150 watts of light and is designed to use in commercial greenhouses, vertical farms, growth chambers, and tissue culture laboratories.

The Eclipse II's precision beam control design and a unique spectrum with edge to edge color uniformity, delivers more light to the plant surface resulting in robust growth in less time.



Features

- Patented LED technology
- Ultra-precision beam control
- Edge-to-edge color uniformity
- No cooling fans
- Adjustable light pattern
- Thin profile (1 in. height)

Benefits

- Maximum photosynthetic light on plants
- Edge-to-edge color uniformity
- Lightweight and silent
- No assembly required
- High-pressure spray waterproof (IP66)

Includes

- Mounting clamps

Application Notes

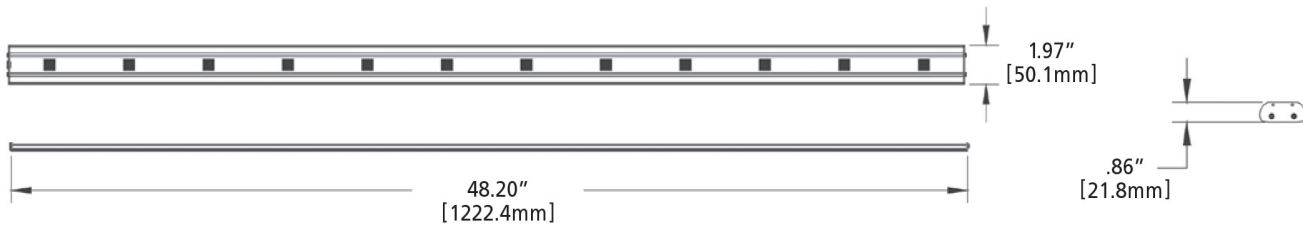
- Greenhouses
- Vertical Farms
- Growth Chambers
- Tissue Culture Laboratories
- Hydroponic Installations
- Aeroponic Installations



ITEM	DESCRIPTION	WATTAGE	VOLTS	WT	DIMENSIONS
ILNS150	Eclipse II LED Bar	150	120-277V*	7.56 lbs.	1.97"W x 48.20"L x .86"H

* 347-480V available. Consult PARsource

Fixture Dimensions

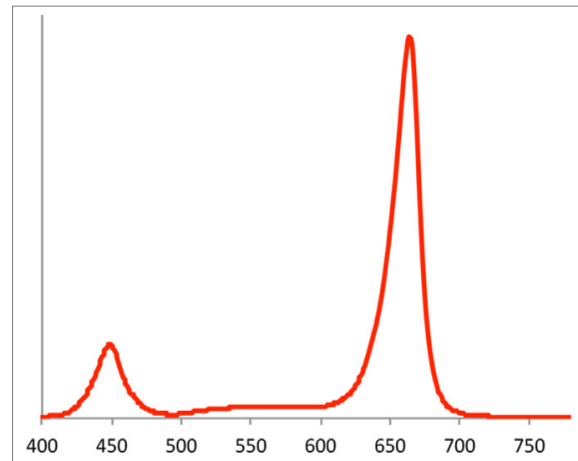


Light Output

SPECTRUM	F3
Beam Angle	50°
Digital Distribution	DD65
Wrad Typical (W)	17.6
PPF Typical (μmol/s)	87
PPF/Wel Typical (μmol/J)*	1.20
Wel Typical (W)*	72.3

* Including external power supply with 85% efficiency

Spectrum



TECHNICAL SPECIFICATIONS

Input Voltage	120-277V 347-480V (Consult PARsource)
Drive Current	530mA
Wattage	150W
Finish	Clear anodized finish
Environmental Rating	IP66 per IEC529
Fixture Weight	7.56 lbs.
Dimensions	1.97"W x 48.20"L x .86"H
Cord Length	Typical cord length between the bars is 18"

General Spacing Requirements

USE	HEIGHT	SPACING
Vertical Farms	12-24"	8-12" o/c
Tissue Culture Laboratories	12-24"	8-12" o/c
Growth Chambers	12-36"	8-12" o/c
Hydroponic/Aeroponic Installations	12-36"	8-12" o/c



PARsource
2249 S. McDowell Extension
Petaluma, CA 94954 USA
855.727.5483 (855-PAR-LITE)

Authorized Dealer